



Robert Jacobus
Head Golf Professional



Ken Creely
Director
Country Club Operations

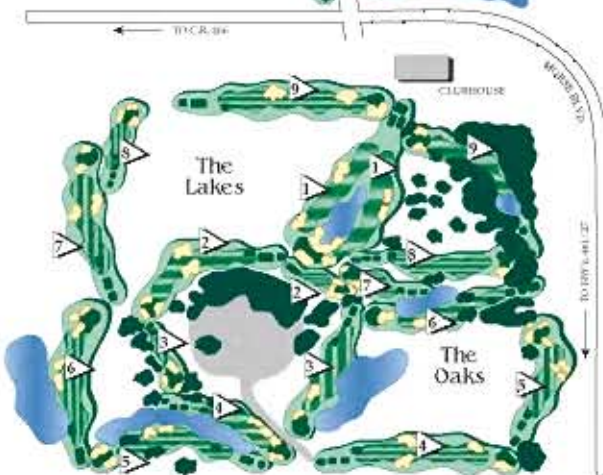
Erik Greulich
Assistant Director
Country Club Operations

Golf Shop
352-753-5155

Restaurant
352-753-0100



The Palms



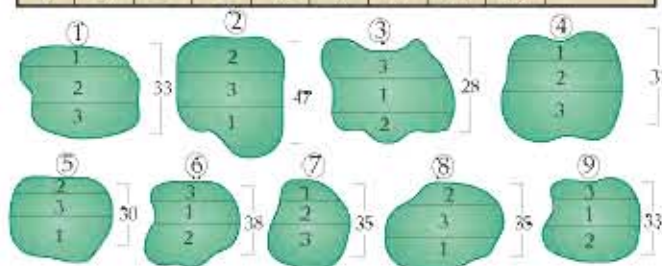
The Lakes

CLUBHOUSE

The Oaks

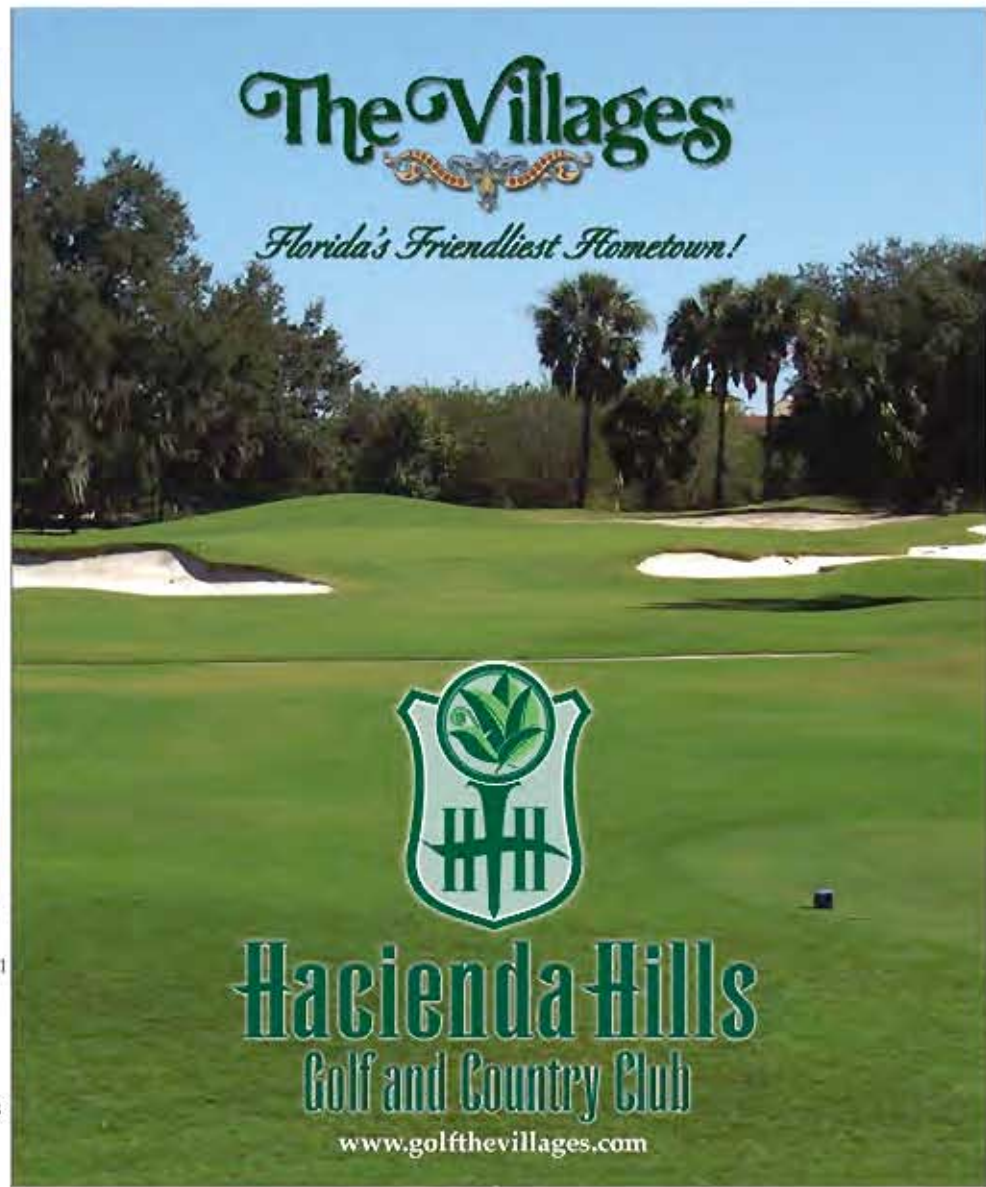
Hacienda Hills Golf & Country Club
1195 Morse Blvd.
The Villages, FL 32159

509	386	172	522	399	350	391	132	336	3197
485	362	160	493	373	310	345	118	328	2974
432	279	136	443	341	265	310	107	300	2613
360	263	112	391	282	214	267	93	241	2223
1	2	3	4	5	6	7	8	9	TOTAL
:16	:30	:40	:56	1:10	1:24	1:38	1:48	2:02	
PALMS									
7	8	6	1	3	4	2	9	5	
2	7	9	1	4	6	5	8	3	



The Villages

Florida's Friendliest Hometown!

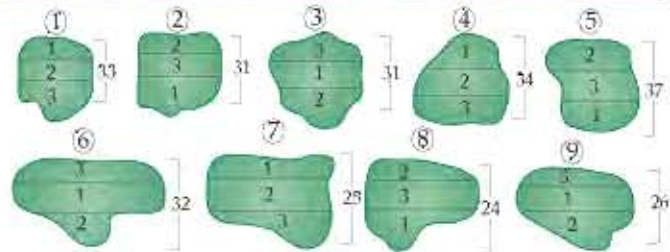


Hacienda Hills
Golf and Country Club

www.golfthevillages.com

GOLD	10 or below	453	417	152	336	429	402	383	171	506	3249
BLUE	Men 25 or below Ladies 12 or below	433	392	134	313	407	384	360	148	478	3049
WHITE	Men All Hdcp. Ladies 18 or below	413	339	110	291	319	318	287	129	401	2607
GREEN	Men All Hdcp. Ladies All Hdcp.	355	333	104	225	304	300	284	111	390	2406
HOLE		1	2	3	4	5	6	7	8	9	TOTAL
PACE OF PLAY		:16	:30	:40	:54	1:08	1:22	1:36	1:46	2:02	
HDCP#											
HDCP#											
HDCP#											
HDCP#											
PAR		5	4	3	4	4	4	4	3	5	36
HDCP#											
HDCP#											
HDCP#											
MEN'S HDCP.		9	2	7	5	1	3	4	6	8	
LADIES' HDCP.		4	1	9	3	2	5	7	8	6	

LAKES



Rules of Play

The United States Golf Association Rules shall govern play except when modified by posted local rules and local rules on this scorecard.

Local Rules & Etiquette

- OB defined by white lines, stakes, fences, walls, and street.
- Ball hawking is strictly prohibited.
- Players stopping at clubhouse may lose their position or their last nine.
- Yardage markers are measured to center of the greens.
- Golf carts must remain on paths on all par 3's and around all tees and greens.
- Please observe proper golf course etiquette, rake bunkers, repair ball marks and fill divots with sand.
- All mulched flower beds are mandatory free relief.
- All mulched pampas grass beds are not free relief.

Course is proudly irrigated with reclaimed water - Do Not Drink (No Beber)

COURSE / SLOPE RATING

TEES	LAKES/OAKS	OAKS/PALMS	PALMS/LAKES
GOLD	70.9/119	70.3/122	70.4/121
BLUE	69.1/118	68.3/118	68.2/118
WHITE	65.6/112	65.7/108	64.4/108
GREEN	63.1/107	62.8/98	62.4/98
LADIES			
BLUE	74.8/132	73.9/130	74.3/128
WHITE	70.6/121	70.1/120	69.6/119
GREEN	67.5/115	66.0/108	65.8/109

NAME / HDCP #	OUT	IN	TOT	HCP	NET	ESC

DATE: _____ TEES: _____

COURSES PLAYED: _____

SCORER: _____

ATTEST: _____

485	150	337	480	316	429	179	378	405	3159	
466	139	314	461	295	399	160	349	373	2956	
446	122	251	441	274	350	136	339	291	2650	
375	117	245	390	233	312	113	301	288	2374	
HOLE	1	2	3	4	5	6	7	8	9	TOTAL
PACE OF PLAY	:16	:26	:40	:56	1:10	1:24	1:34	1:48	2:02	
HDCP#										
HDCP#										
HDCP#										
HDCP#										
PAR	5	3	4	5	4	4	3	4	4	36
HDCP#										
HDCP#										
HDCP#										
MEN'S HDCP.	4	6	5	8	9	1	7	3	2	
LADIES' HDCP.	1	8	7	4	6	2	9	3	5	

OAKS

